

The logo for KEYA, featuring the word "KEYA" in a stylized, white, sans-serif font. The letters are interconnected, with the 'K' and 'E' sharing a vertical stroke, and the 'Y' and 'A' sharing a vertical stroke. A registered trademark symbol (®) is located at the top right of the 'A'.

UNLOCK INNOVATION

The background is a solid blue gradient. On the right side, there are several thin, white, curved lines that sweep upwards and outwards, creating a sense of motion and depth. On the left side, there are several thin, white, curved lines that sweep downwards and outwards, mirroring the lines on the right.

User Handbook
KEYA CONTROL APP
TRONIC PRO

CONTENTS

1. How to install and run the Keya Control App	3
2. How to log in	4
3. How to connect TRONIC PRO lock to the Mobile	5
4. INTERFACE: Keya Control App – TRONIC PRO	6
5. HOME: Keya Control App - TRONIC PRO	7
6. CONFIGURATION: Keya Control App - TRONIC PRO	8
7. AUTO-OPENING : Keya Control App – TRONIC PRO	9
8. CODES: Keya Control App – TRONIC PRO	10

1. How to install and run Keya Control App

- I. Download the application.
- II. The shortcut will be automatically created in the Menu.
- III. Run the application.
- IV. Language detection automatically.

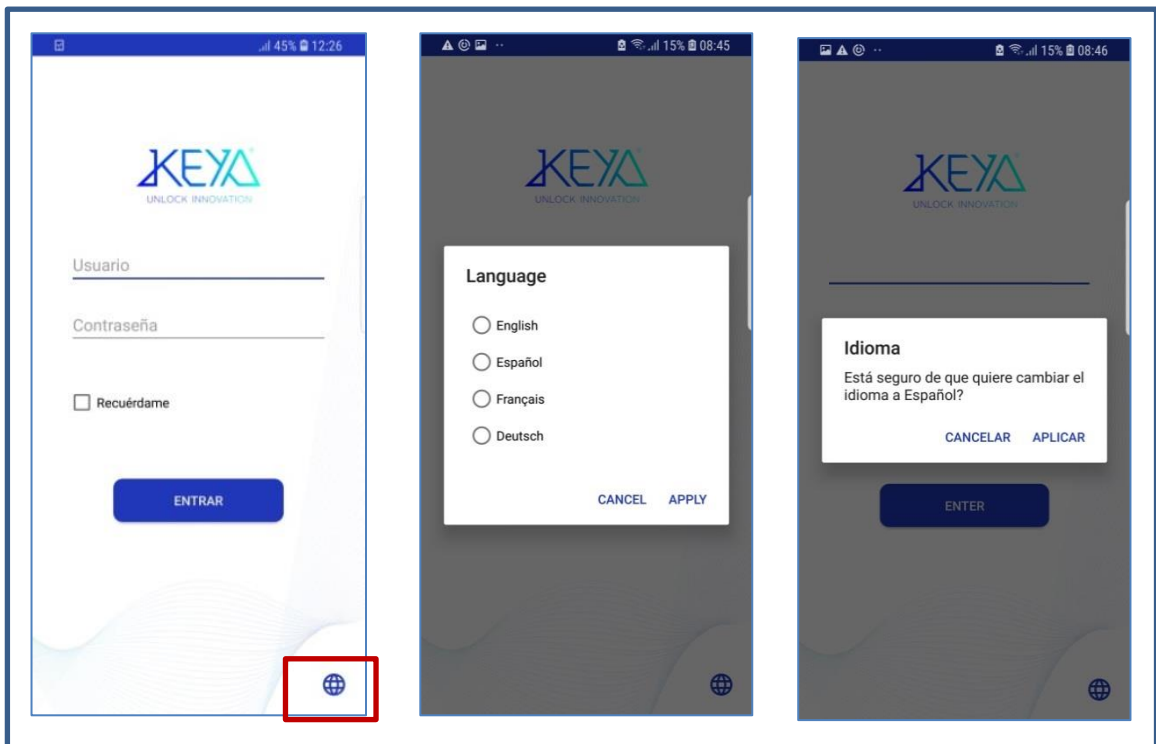


Figure 1: Switch the language

2. How to log in

- I. Execute the program and log in with the acquired *username* and *password*.
- II. Create a new password. (It must be larger than 4 digits and different from the previous one).
- III. When logging in for the first time, enter the purchased *license code*.

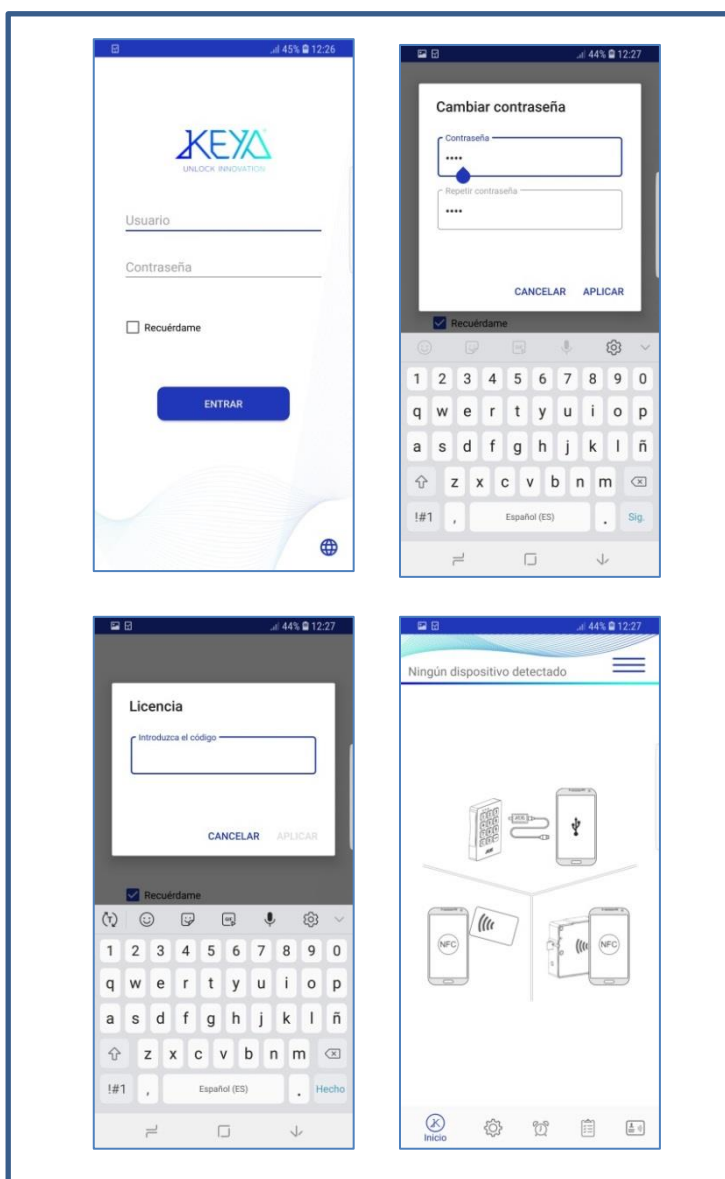


Figure 2: Home Page



3. How to connect TRONIC PRO lock to the Mobile phone

- I. Once the app is running, connect the TRONIC PRO to the device using the *communications key* and *Mobile USB Cable* set.



Figure 3: Connecting the cables to a lock

- II. Allow permissions to use the mobile device's USB adopter. (See Figure 4)

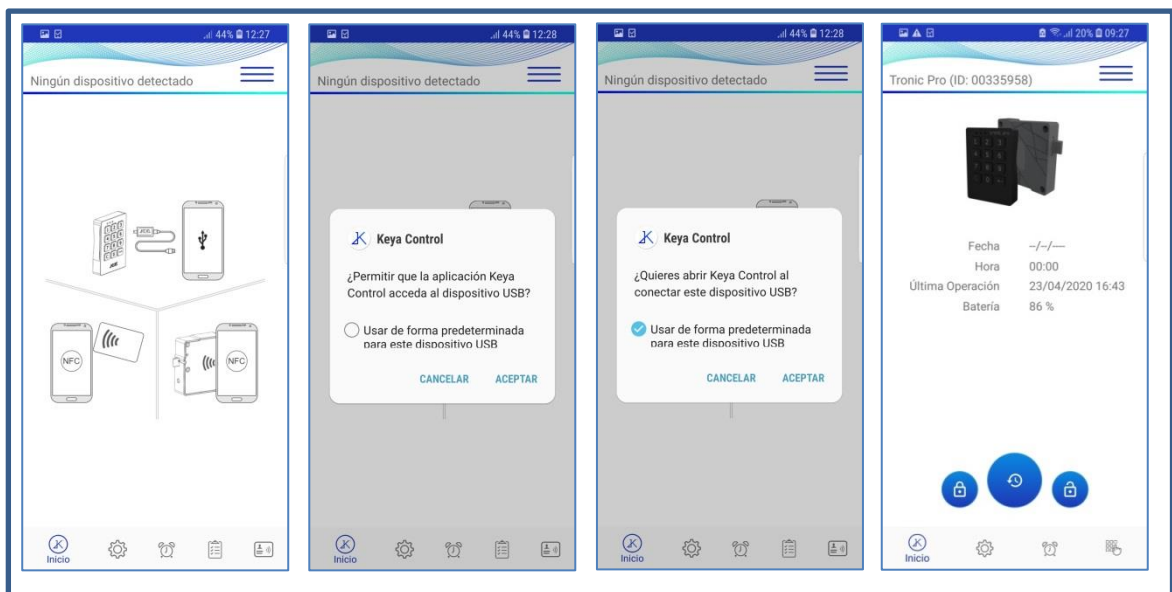


Figure 4: USB communication permissions



4. INTERFACE: Keya Control App – TRONIC PRO

In any situation, you can navigate to the user interface by pressing *Options* button located at the top right or, if your mobile phone allows it, by sliding your finger from right to left on the screen. (See figure 5):

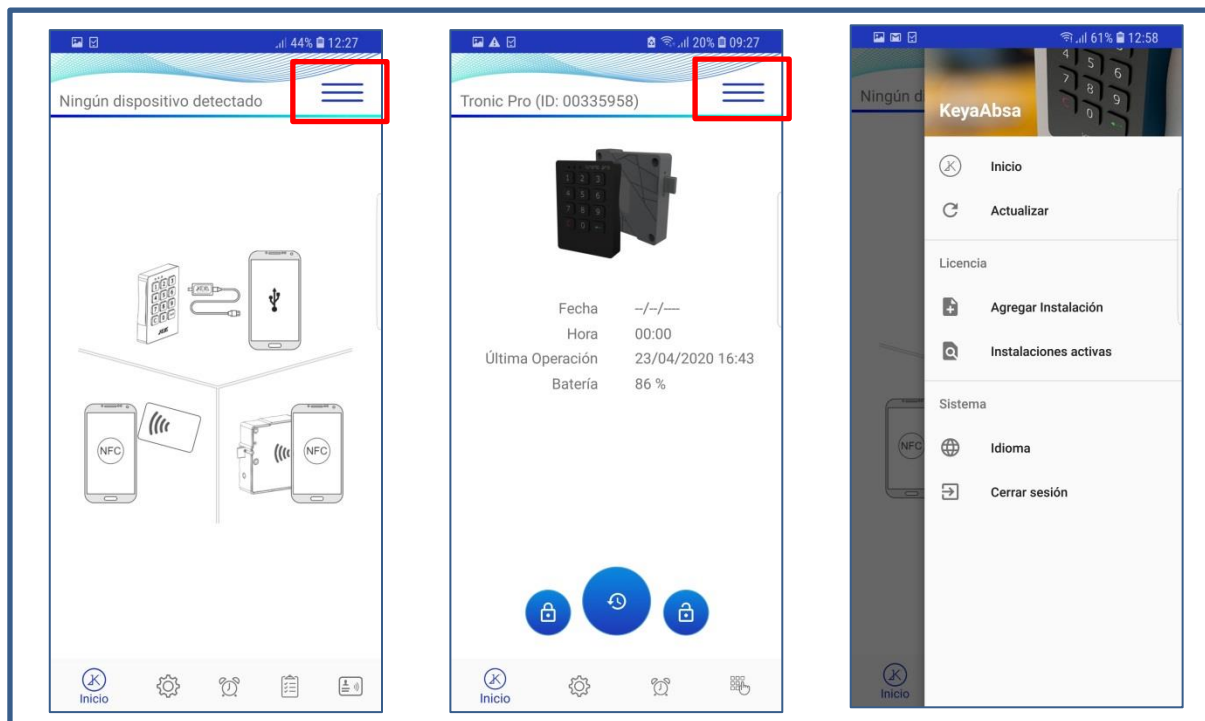


Figure 5: Interface for Keya Control App

	When pressing the <i>Home</i> button allows you to go to the home page of the App.
	<i>Update</i> button reloads the last action that was being displayed on the screen, parameter reading, card reading, etc.
	Open <i>Licenses</i> field so you can add new IDOFs and Client IDs.
	Allows to display the active installations within the account.
	Allows to change the language.
	Allows to close the App.

Table 1: Keya Control App Options

5. HOME: Keya Control App – TRONIC PRO



Figura 5: Home TRONIC PRO

Date	Internal date of the lock.
Time	Time inside the lock.
Last Action	Date of the last operation performed
Battery	Battery status (%).

Table 2: Lock data.

	Close Push-Button. Allows the lock to be closed.
	Allows you to set the lock to Time.
	Open Push-Button. Allows you to open the lock.

Table 3: Home buttons.



6. CONFIGURATION: Keya Control App - TRONIC PRO

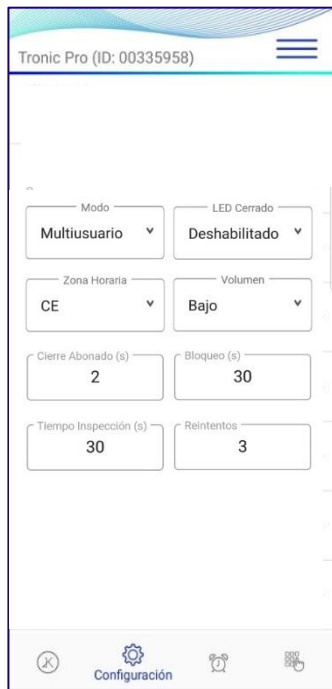


Figure 7: TRONIC PRO configuration

Mode	Subscriber/Multi-user.
Retries	Number of retries to set the password
Volum	Silence/Low/High.
LED Closed	Disable/Enable
Time zone	No zone/ CE/ US/ Mexico/ Australia/ New Zealand.
Blockade	Blocking time that is performed if Retries are reached.
Closing Subscriber	In subscriber mode, the lock closes automatically after the specified number of seconds.
Inspection Time	Time that the lock remains open while the inspection action is performed.

Table 4: TRONIC PRO parameters



7. AUTO-OPENING : Keya Control App TRONIC PRO

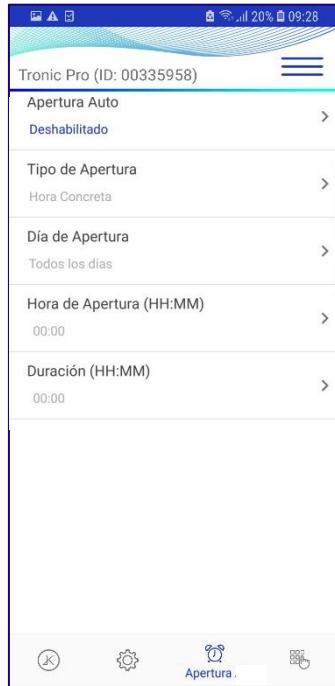


Figure 8: TRONIC PRO automatic squeeze

Process to activate the automatic opening:

- I. Enable the Auto Open option.
- II. If the lock allows it, select the Opening Type.
- III. Select which day/s you wish the opening to take place.
- IV. Specify what time you want the opening to take place in Opening Time (HH : MM) and the Duration (HH:MM) for the duration of the automatic opening.

Finally, it is recommended to check the current time of the lock, to avoid possible inconveniences, after each modification of Automatic Opening it is recommended to update the Time of the lock with the "Set Time" button located in the Home.

Auto Opening	Automatic opening: Disabled /Enabled
Opening mode	Concrete Time. Modifiable if you have the permissions.
Opening day	Monday/Tuesday/Wednesday/Thursday/Friday/Saturday/Sunday/ Every day/Working days only
Opening Time (HH:MM)	Specific time that you want the Opening to take place.
Duration (HH:MM)	Duration of automatic opening. If "0 hours" and "0 minutes" are specified, the lock will remain open.

Table 4: Automatic opening parameters.

8. CODES: Keya Control App – TRONIC PRO

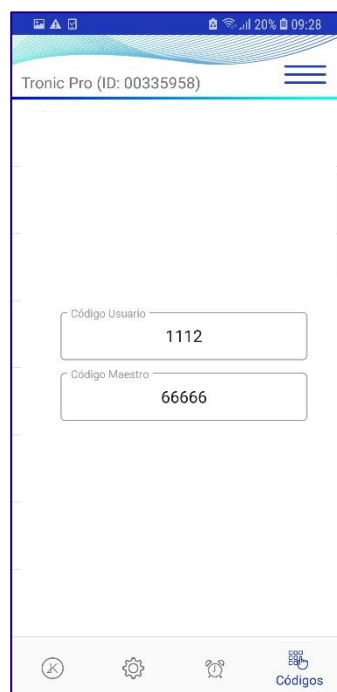


Figure 9: TRONIC PRO code configuration

User Code	Code that allows you opening the lock.
Master Code	Master code to activate the User parameter reset process.

Table 5: Lock codes

